

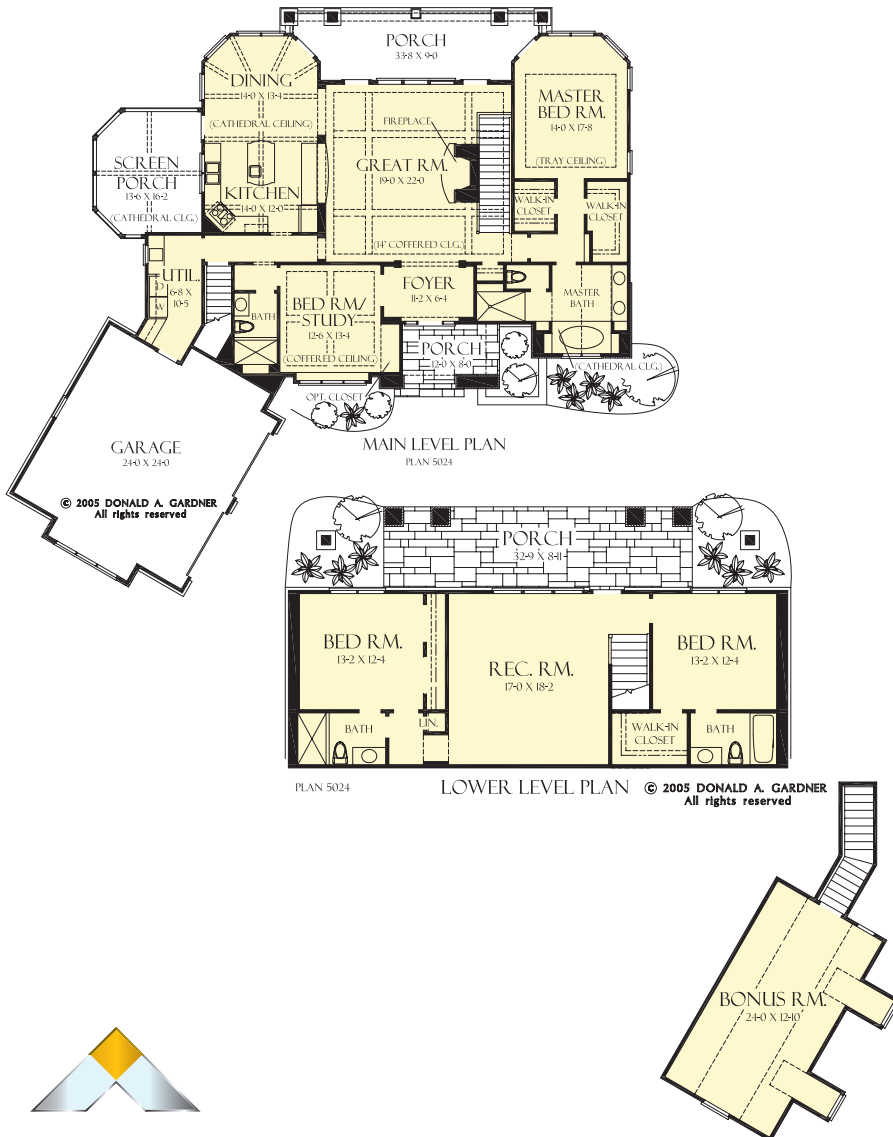
The Laurelwood Plan 5024



© 2008 Donald A. Gardner Architects, Inc.

Overflowing with details, this home plan features all of the niceties that enhance family life. Ceiling treatments crown every living space on the first floor, and bay windows hug the screen porch, dining room and master bedroom. The lower level features two full bathrooms for each bedroom, making it the perfect home plan retreat for overnight visitors or older children.

Total Living Area.....3,014 sq. ft.



PRECISION
Custom Home Builders

770-720-2052

dan@precisioncustomhomebuilders.com

