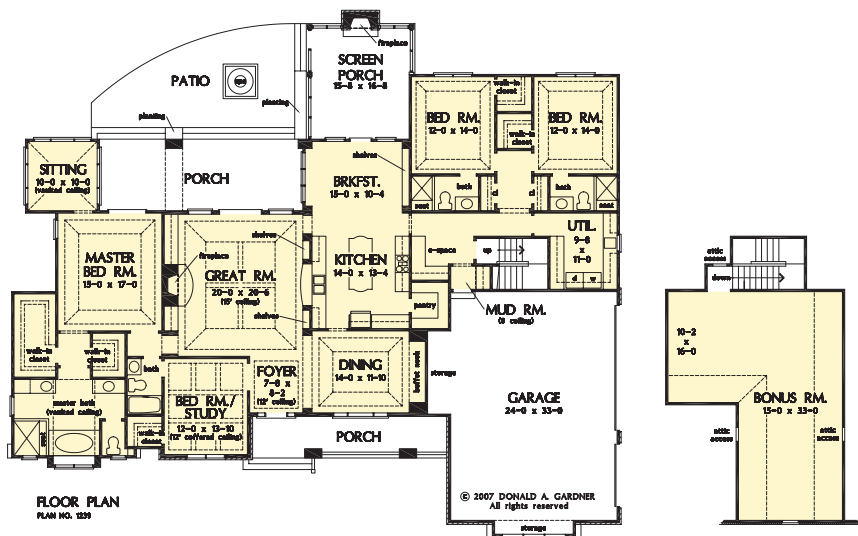


The Birchwood Plan 1239



© 2007 Donald A. Gardner Architects, Inc.

This Arts and Crafts styled sprawling ranch house plan has so much to offer the modern homeowner. A three car garage with extra storage adds space for a third automobile, workshop, or golf cart. Inside, each bedroom of this house plan features elegant ceiling treatments, a walk-in closet and an adjacent full bathroom. A large utility room with a sink is conveniently placed down the hall from the secondary bedrooms. The large, gourmet kitchen of this house plan includes a walk-in pantry and a large central island. The spacious dining room offers large windows and a buffet nook for furniture. Custom-style details abound in this luxurious plan with built-ins in the great room and breakfast areas. This house plan's well-appointed master suite includes a secluded sitting room that enjoys rear views, porch access and dual walk-in closets. The master bathroom is a spa-like retreat with dual vanities, a large walk-in shower, built-ins and a vaulted ceiling.



Total Living Area.....3,048 sq. ft.

PRECISION
Custom Home Builders

770-720-2052

dan@precisioncustomhomebuilders.com

